

V901 Seismograph



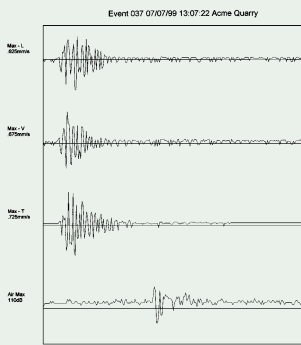
Designed by engineers who actually use them!

- Impulse mode for blast monitoring
- Continuous mode for piling, rail and road traffic monitoring
- Tri-axial geophone sensor - Option for second tri-axial sensor
- Features:
 - triggering from 0.1 mm/s
 - single range from 0.1 mm/s to 200 mm/s
 - auto record length from 2 to 18 seconds (in impulse mode)
- Can trigger and record PPV, acceleration or displacement parameters
- Air overpressure from 100 to 140 dB Linear Peak
- Memory for about 300 events or 30 days continuous recording
- Battery operated, uses 2 Alkaline 'D' cells (or external 12 volt supply)
- Built in timer function
- Instant readout and review of memory event results on LCD
- Download to PC with supplied RS232 cable and Windows™ based software
- Supplied with Shoulder Bag

- Options:
- Second Tri-Axial Geophone Pack
 - Two stage audible and visible alarm
 - Solar panel
 - Modem
 - Portable Printer
 - Vibration Dose Value Transducer



Example Print Outs



Graph Period 0.00s to 2.31s

Event#	L	Y	T
Event# 037			
Variable	L	Y	T
Start A			735
Min Max (mm/s)	0.25	0.25	
Resolution (mm)	4.86	2.55	
Min Max (g)	0.05	0.05	0.16
Min Max (mm)	0.02	0.01	0.02
Resolution Max A	0.025mm/s		

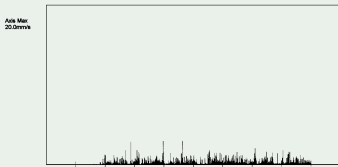
04 Comments: 11068

Date: 07/07/99

Time: 13:07:22

Voltage: 7.75

Event 003 06/01/99 07:00:10 Piling Activity



Graph Period 07:00 to 17:00

Event# 003

Min Value

Time

Date

Event# 003

Min Value

Time

Date

Event# 003

Min Value

Time

Date

Event# 003

Min Value

Time

Date

Event# 003

Min Value

Time

Date

Event# 003

Min Value

Time

Date

Event# 003

Min Value

Time

Date

Event# 003

Min Value

Time

Date

Event# 003

Min Value

Time

Date

Event# 003

Min Value

Time

Date

Event# 003

Min Value

Time

Date

Event# 003

Min Value

Time

Date

Event# 003

Min Value

Time

Date

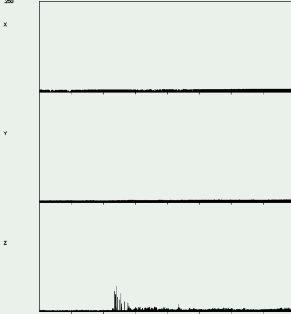
Event# 003

Min Value

Time

Date

Event 005 29/09/00 23:00:00 Overnight - 8 Hour VDV - Shanakiel



Graph Period 23:00 to 07:00

Event#	X	Y	Z	X	Y	Z
Event# 005						
Hour						
Hour 1	0.01	0.02	0.03	0.04	0.05	0.06
Hour 2	0.02	0.03	0.04	0.05	0.06	0.07
Hour 3	0.03	0.04	0.05	0.06	0.07	0.08
Hour 4	0.04	0.05	0.06	0.07	0.08	0.09
Hour 5	0.05	0.06	0.07	0.08	0.09	0.10
Hour 6	0.06	0.07	0.08	0.09	0.10	0.11
Hour 7	0.07	0.08	0.09	0.10	0.11	0.12
Hour 8	0.08	0.09	0.10	0.11	0.12	0.13
Hour 9	0.09	0.10	0.11	0.12	0.13	0.14
Hour 10	0.10	0.11	0.12	0.13	0.14	0.15

Optional Battery Operated Portable Printer



V901 Specifications:

Power Source: Two Alkaline 'D' cells
(or external 12 volt supply)

Battery Life: Up to 20 days continuous monitoring

Dimensions: 300mm x 250mm x 130mm

Weight: 3.6Kg (with one tri-axial transducer pack)

Operating

Temperature: -10°C to + 50°C

Your Local Distributor:

BSRIA Instrument
Solutions

Tel No. 01344 459314

www.bis.fm

